

Advancing the low carbon transition in Irish transport

Dr Diarmuid Torney and Dr Laura Devaney

Climate Change Advisory Council workshop on Transition of Irish
Transport: Issues, Approaches and Options

19 September 2019



 An Chomhairle Náisiúnta Eacnamaíoch agus Shóisialta
National Economic & Social Council

DIAGNOSIS



Ollscoil Chathair
Bhaile Átha Cliath
Dublin City University

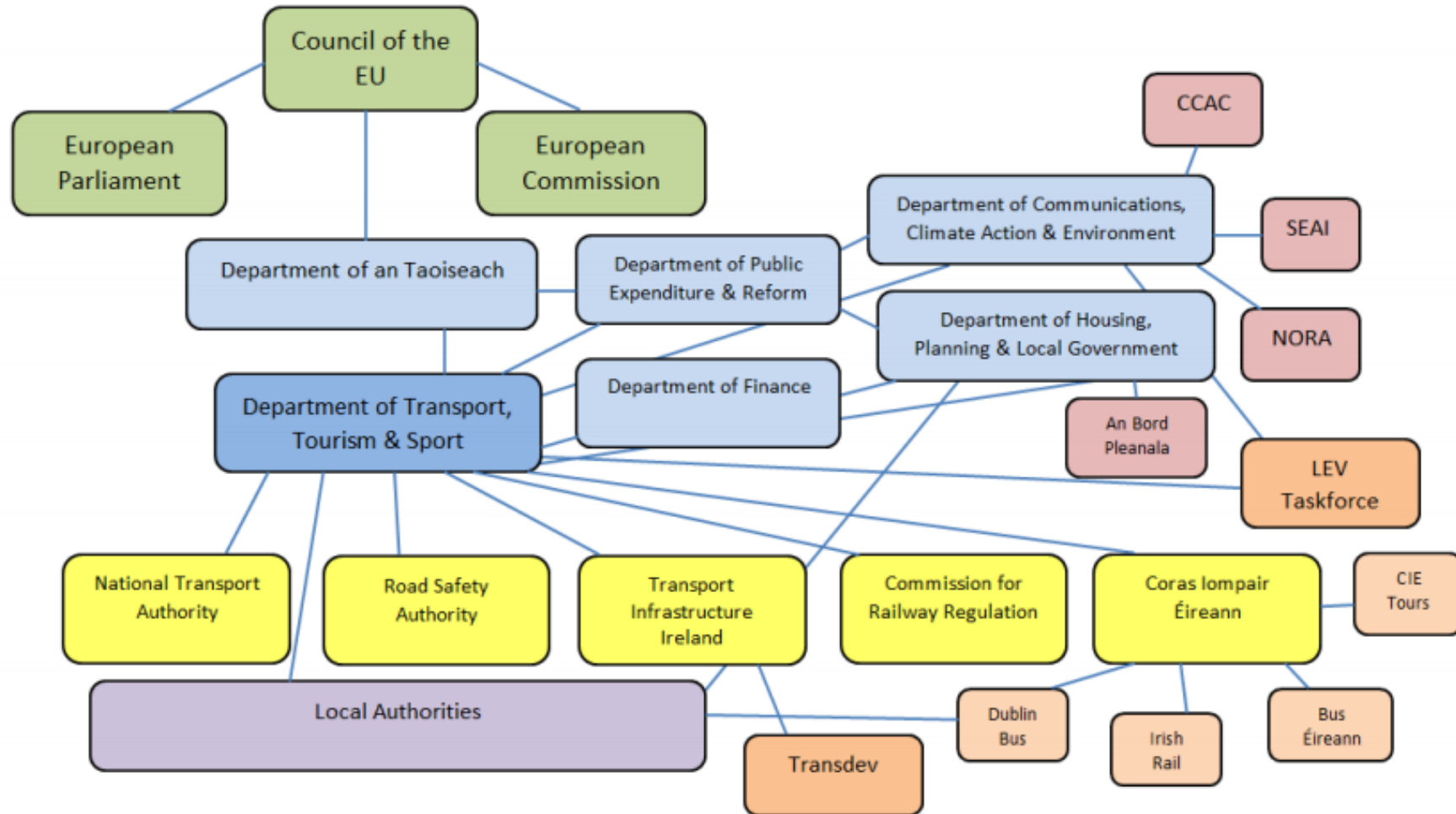
How transport operates: Inherent complexities

- Complex internal tensions between:
 - Modes of transport
 - Public and private actors
 - Rural and urban divides
 - Special interests: vested and perceived ‘NIMBYism’
- Complex external interactions with broader policy objectives and systems:
 - Tourism; health; education
 - Decarbonising the energy sector
 - Land Use: planning for sprawling settlement vs Transport Oriented Development; Socio-cultural shift required too

What drives the system: Contested priorities

- (Mis)alignment with “Avoid, Shift, Improve” approach
- Low carbon transition has yet to be embedded across government, not just in transport
 - All of government plan an encouraging development
 - Climate aware ministers needed across all departments
- Disagreement over what low carbon transition entails
 - Low carbon vs sustainable framing

Who shapes transport outcomes: Fragmented governance



RECOMMENDATIONS



Ollscoil Chathair
Bhaile Átha Cliath
Dublin City University

1. Acknowledge sectoral complexities

- Adopt a collaborative, adaptive and reflexive approach to policymaking
- Support bottom-up approaches to low carbon transition
- Understand transport as a social practice

2. Challenge institutional priorities

- Provide high-level direction from the highest levels of government
- Align mandates of transport institutions with low carbon transition
- Leadership by example in the public sector

3. **Interrogate** the institutional landscape

- Taskforces
- Hubs and public-private partnerships
- Forums for peer learning
- Deliberative forums for stakeholder and citizen participation
- Research infrastructure for transport policymaking

diarmuid.torney@dcu.ie
laura.devaney@dcu.ie

School of Law and Government
Dublin City University



Ollscoil Chathair
Bhaile Átha Cliath
Dublin City University